



APPENDIX 11

Task 7 PSA Report Appendix (Aerials)

THIS PAGE WAS INTENTIONALLY LEFT BLANK



Source: Aerial Map obtained from NYS High Resolution Digital Orthoimagery Program - Suffolk County dated 2001

Prepared for:
 Suffolk County
 Department of Public Works

Prepared by:
 Cashin Associates, P.C.
 Cameron Engineering & Associates, LLP

Legend

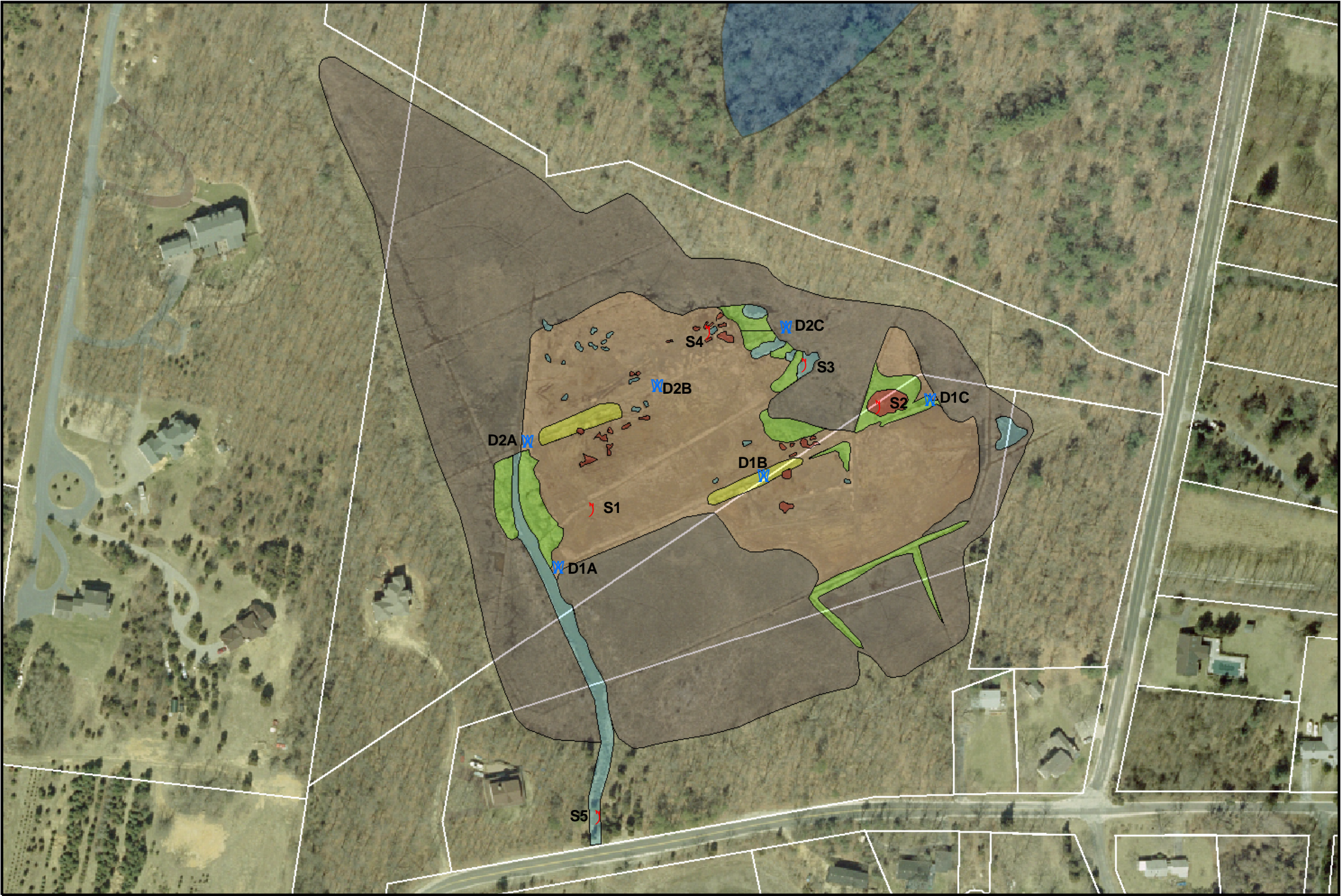
■ Tidal Inundation Stake	D Ditch Label with Number	■ Low Marsh	■ Pond
S Stake Label with Number	P Pond Label with Number	■ Phragmites australis	■ Suffolk County Tax Map
◆ Sampling Station	D Cross Ditch Label with Letter	■ Upland	
	■ High Marsh	■ Salt Panne	

Meters

0 75 150 300

Suffolk County Vector Control &
 Wetlands Management Long-Term Plan
 and Environmental Impact Statement

Task 7 - Priority Study Areas
 Captree Wetland
 Babylon, New York
 May, 2005



Source: Aerial Map obtained from NYS High Resolution Digital Orthoimagery Program - Suffolk County dated 2001

Prepared for:
Suffolk County
Department of Public Works

Prepared by:
Cashin Associates, P.C.
Cameron Engineering & Associates, LLP

Legend

Sampling Station	High Marsh	Low Marsh	Freshwater Wetlands
Tidal Inundation Stake	Phragmites australis	Panne	Suffolk County Tax Map
S Stake Label with Number	Mix High/Low Marsh	Pond	
D Ditch Label with Number	D Cross Ditch Label with Number		

Suffolk County Vector Control &
Wetlands Management Long-Term Plan
and Environmental Impact Statement

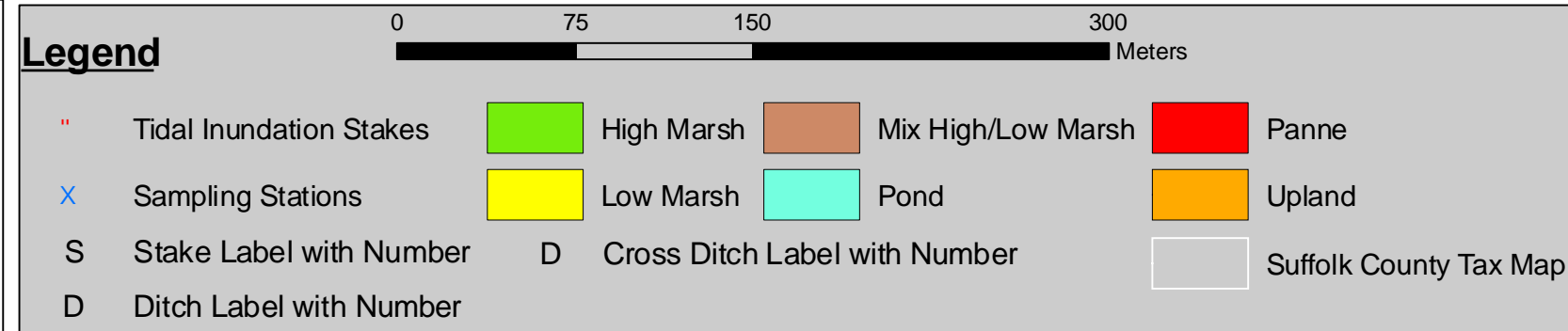
Task 7 - Priority Study Areas
Cedar Beach "Celery Farm" Wetland
Southold, New York
March 2005



Source: Aerial Map obtained from NYS High Resolution Digital Orthoimagery Program - Suffolk County dated 2001

Prepared for:
Suffolk County
Department of Public Works

Prepared by:
Cashin Associates, P.C.
Cameron Engineering & Associates, LLP



Suffolk County Vector Control &
Wetlands Management Long-Term Plan
and Environmental Impact Statement

Task 7 - Priority Study Areas
West Meadow Wetland
Stony Brook New York
March 2005



Source: Aerial Map obtained from NYS High Resolution Digital Orthoimagery Program - Suffolk County dated 2001

Prepared for:
Suffolk County
Department of Public Works

Prepared by:
Cashin Associates, P.C.
Cameron Engineering & Associates, LLP

Legend

■ Tidal Inundation Stake	D Ditch Label with Number	■ Low Marsh	■ Salt Pannes
S Stake Label with Number	P Pond Label with Number	■ High Marsh	□ Suffolk County Tax Map
◆ Sampling Location	D Cross Ditch Label with Letter	■ Phragmites australis	

0 50 100 200 Meters

Suffolk County Vector Control &
Wetlands Management Long-Term Plan
and Environmental Impact Statement

Task 7 - Priority Study Areas
West Gilgo Beach Wetland
Babylon, New York
May, 2005